

O'RING & CHARGEPORT COVER UPGRADE KIT INSTALLATION INSTRUCTIONS

- **Removal of Drive Unit (referred to as DU) from Bike.**
 - *Use Shimano TL-FC39 lock-ring tool to remove lock-ring from spider (note: reverse thread)
 - *Or remove 4 chainring bolts from spider and remove chainring.



- Remove chain guide from the frame to expose motor bolt.
 - *Note any spacer washers and their orientation for re-assembly process.



- Remove 2 lower battery mounting bolts and spacer washer from down tube.
- Remove guard side mounting bolt from motor and remove guard from the bike.



- **Drive Unit removal**

- Loosen 2 rear DU bolts ½ turn only.
- Remove 2 forward and 2 middle DU bolts completely while supporting DU.
 - *note: bolt lengths and locations for re-assembly.
- Remove black wire coupler from DU
- Remove 2 Di2 wires from DU
- Remove the last 2 DU mounting bolts and remove DU from bike.

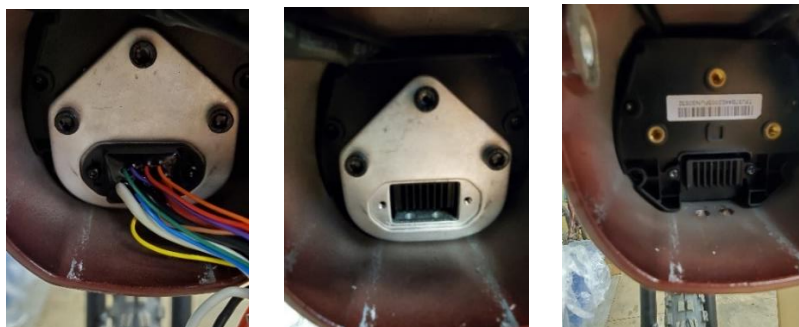


- With DU out of the way, undo charge port connections from main harness.
- *Visually inspect seals to ensure they are seated correctly as pictures show.
- If seals look good re-connect plugs.
 - *If an issue is found it must be resolved before moving on to the next step.



- **Battery plate removal**

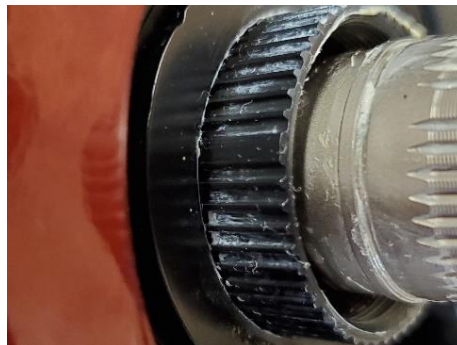
- Pic1... Remove main wire harness from the battery by removing 2 tiny bolts and move harness out of the way.
 - *please take note the harness is still attached to the top tube power button and charge port.
- Pic 2... Remove the 3 battery plate mounting screws and set them aside.
- Pic 3... Remove mounting plate and note its orientation for re-assembly.



- **Install O-ring**
- Pic 1... Carefully install O-ring over battery terminal
- Pic 2... Make sure O-ring is installed fully and is resting firmly against battery surface by using a blunt tool like rounded Bhondus end of 2mm allen key.
- Pic 3 &4... Ensure Oring is fully seated onto battery.



- **Re-Assembly process**
- Install battery mounting plate and bolts (torque to 4nm).
- Connect wire harness to the battery (tiny screws only need to be hand / finger tight)
- Install DU by installing the 2 rear motor mounting bolts, left and right side until snug, then back each bolt out by ½ turn to allow the motor to still move freely
- Install Di2 wires and Coupler to DU.
- **IMPORTANT**... Turn on bike, check for full functionality by using walk assist feature.
 - *If system works, proceed to next step.
 - *If bike does not turn on, check all connections and diagnose before next step.
- While rotating motor up into place use a free hand to position wires and housings into the cavity so that nothing gets pinched or bunched up.
 - *Take special note of dropper post housing as this must remain free to move
- Install the remaining 4 DU mounting bolts, then torque all 6 bolts to 12.5nm (drive side bolts first).
- Install lower motor guard cover and install lower battery fixing bolts and spacer until snug.
- Install cover mounting screw into side of DU finger tight (1nm)
- Tighten downtube battery fixing screws to 4nm.
- Check upper battery mounting screws are torqued to 4nm
- Install chain guide making note of the orientation of any required spacers, torque to 3nm.
- Install spider and chainring assembly.
 - *Note this is splined and may require lining up in correct orientation with gear on DU



- Install spider lock-ring and tighten to 35-45nm.
 - *Remember, this is reverse thread
 - Install spindle spacer washer if applicable
 - Install drive side crank arm noting correct orientation of Shimano spindle safety lock if required
 - Apply Shimano spindle lock if required.
 - Tighten crank arm pinch bolts to 12nm
 - Install chain
-
- **Charge Port Cover Replacement**
 - Pic 1... Cut integrated charge port cover.
 - Pic 2... Shows clean cut.
 - Pic 3... Install new looped cover.



Test bike again and go riding 😊