

MOTOR IDENTIFICATION: How To ID A VelectriX Motor

The motors on VelectriX e-bike models will vary from model to model and year of manufacture and also where they are positioned on the bike. It's important to correctly identify the motor, before commencing a repair, submitting a warranty or ordering a spare part(s).

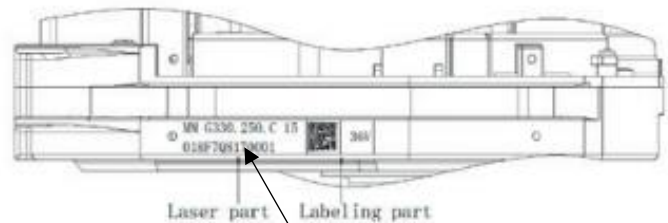
There are 3 different positions where a motor can be positioned on our bikes – rear wheel, front wheel or bottom bracket (mid drive) and each motor usually has a code or markings to correctly identify the model.

Mid Drive Motors

Bafang MM G330.250.C (Known as M400) - 250 Watt 36V



Shows number M400 on the outside motor casing

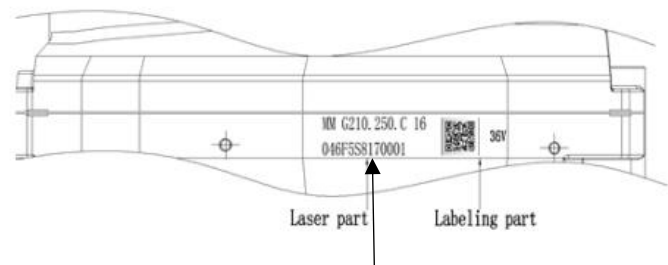


Shows model number MM G330.250.C on the under-side of the motor casing

Bafang MM G210.250.C (Known as M200) - 250 Watt 36V



Shows number M200 on the outside motor casing



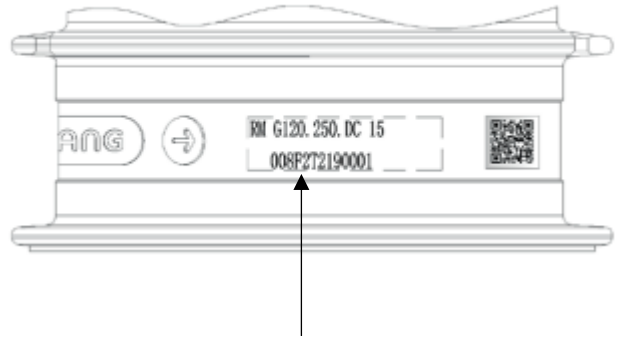
Shows model number MM G210.250.C on the under-side of the motor casing

Rear Hub Motors

Bafang RM G120.250.DC (Known as H400C) - 250 Watt 36V



Motor power cable is on the drive side of motor

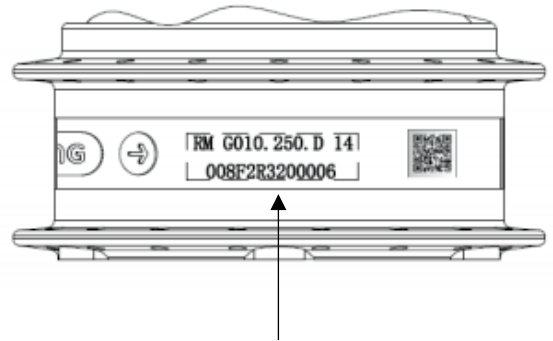


Shows model number RM G120.250.DC on the middle of the motor casing

Bafang RM G010.250.D (Known as H300) – 250 Watt 36V



Motor power cable is on the drive side of motor

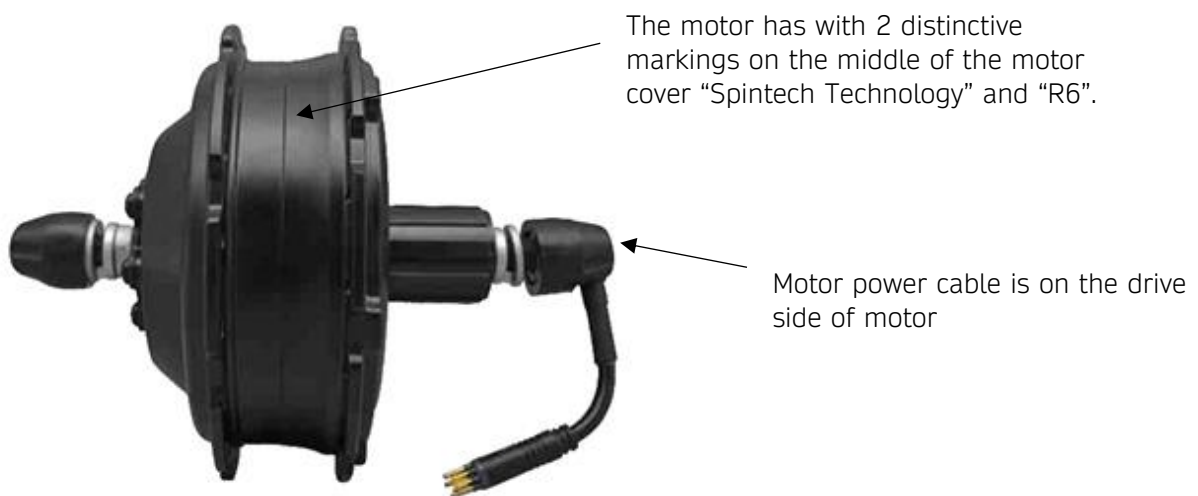


Shows model number RM G010.250.D on the middle of the motor casing

Spintech R1 – 250 Watt 36V

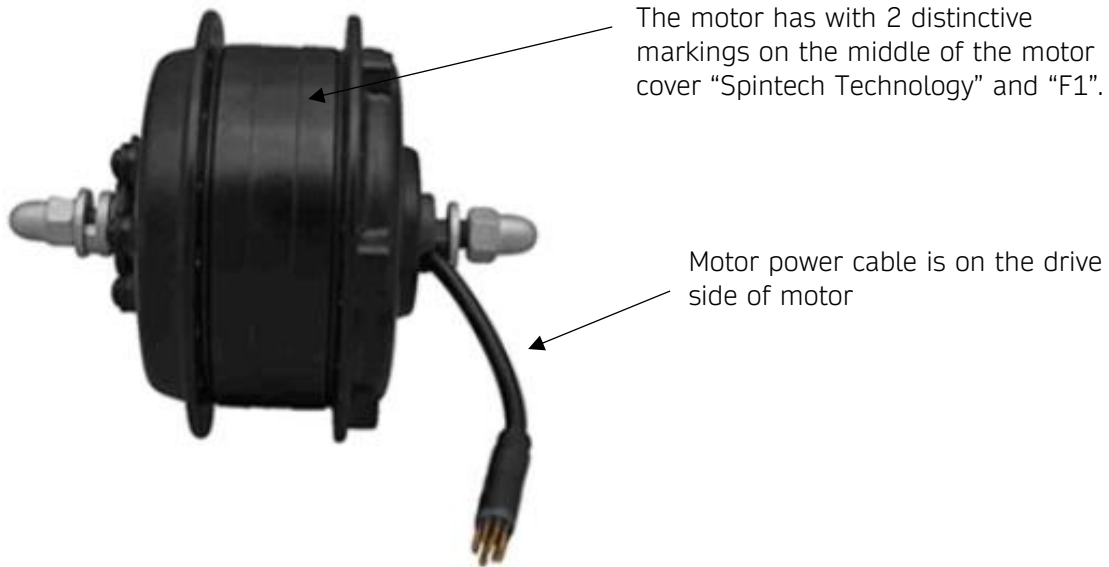


Spintech R6 – 250 Watt 36V

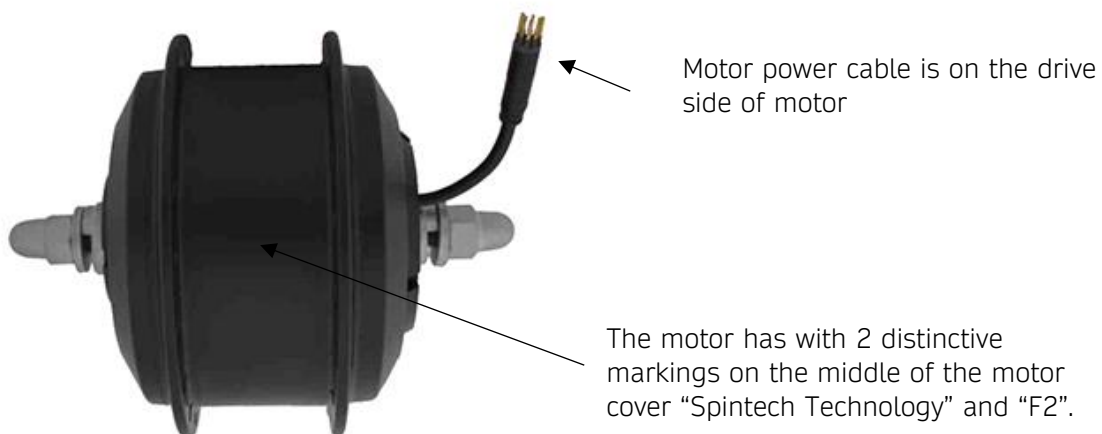


Front Hub Motors

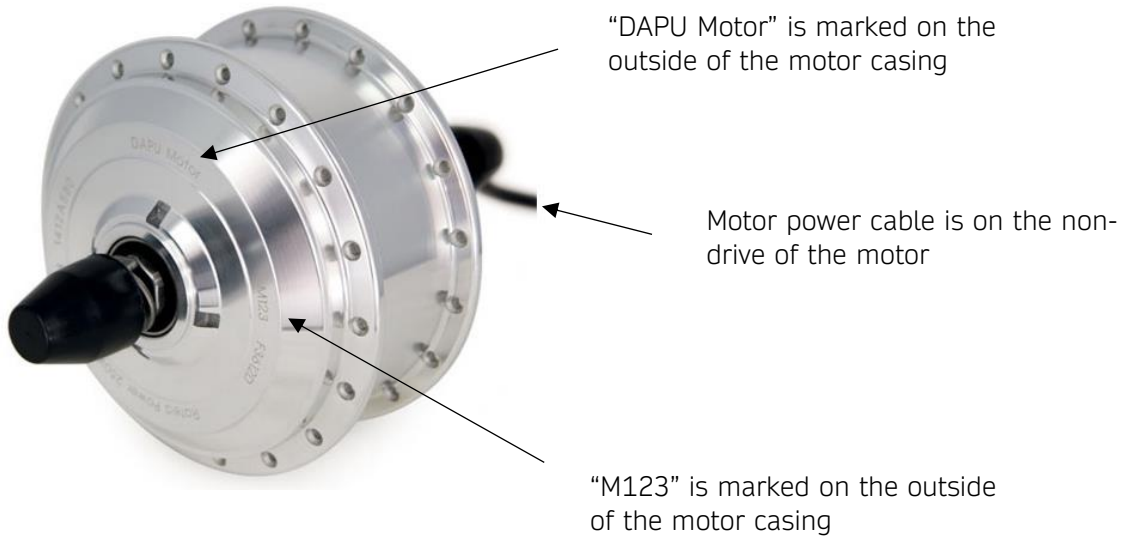
Spintech F1 – 250 Watt 36V



Spintech F2 – 200 Watt 36V



DAPU DP-M123FS – 200 Watt 36V



++ Note the DAPU DP-M123FS motor used on VelectriX e-bikes is black, NOT silver as shown++